



## Semester 2: Welcome

The Office of the Executive Dean  
Prof Avinash Govindjee  
and Deputy Dean  
Dr Lynn Biggs  
Faculty of Law

### Dear Law Students

#### Semester 2: Faculty Newsletter 2020 #1

The Faculty of Law is pleased to welcome you to the start of the second semester of the 2020 academic year.

As you are aware, we plan to complete this semester via a single pathway, with many students able to continue their work on Moodle from their place of residence. Those students experiencing connectivity or other difficulties have already received invitations to return to campus in order to access a more conducive learning environment.

The year has presented a number of challenges, particularly in respect of the two pathways required to complete the first semester. The Faculty has developed various plans, with the support of staff and student leaders, in respect of the online, continuous assessments that will be used again during the second semester. The attached Frequently Asked Questions (FAQs) documents will provide you with more information in this regard, including information about additional assessment opportunities.



Wear it when you  
go out



Try not to touch it



Wash it every 2 days



Make sure it covers  
nose & mouth

We hope that you are ready to tackle the challenges that lie ahead, and remind you to continue to maximise the learning opportunities that will be presented to you in each of the modules for which you are registered.



***A special word to our final years, who commence their final semester of undergraduate studies – we hope that you are able to make the most of this time despite the difficult circumstances and that you will focus completely on developing an understanding of the law that you are able to translate successfully into legal practice. We hope that you have already responded to the request to send your pictures for the final-year photograph.***



Please continue to follow Faculty news and events on Facebook ( <https://www.facebook.com/NMU-FacultyofLaw/> ) and via the Faculty website ( [law.mandela.ac.za](http://law.mandela.ac.za) ). We plan to host various events online during the semester (starting with a guest lecture by one of our new Adjunct Professors on 30 September at 1pm, a webinar on alternative career opportunities and a possible book launch of “All Rise – A Judicial Memoir” by Justice Dikgang Moseneke).

## NELSON MANDELA UNIVERSITY



**The Faculty of Law at Nelson Mandela University, invites you to an online public lecture by Dr Henry Lerm.**

**Title: Introducing Interdisciplinary Learning for Medical and Law Students at University: A Path to Good Ethical Practice.**

Dr Lerm is an Adjunct Professor in the Department of Criminal and Procedural Law at Nelson Mandela University and is associated with the SA Medical Law Association and the Legal Practice Council.

Dr Lerm was admitted as an attorney on 5 February 1987. He is a respected member of the legal community with a wide range of experience in both civil and criminal litigation. He is a campaigner for transformation within the legal profession and a person with high moral values and high ethical standards. Henry possesses the ability to identify legal issues and to apply the law to solve them. He has sound knowledge of law, including Constitutional law, Medical law and Procedural law with a sound academic foundation, having completed his doctorate in law and presenting a wide range of seminars, workshops and lectures.

**Wednesday, 30 September 2020  
13:00 - 14:00**

#MandelaLawEvents

Online public lecture by Dr Henry Lerm, Adjunct Professor in the Faculty of Law's Criminal and Procedural Law department.

Register on this link: <https://law.mandela.ac.za/Public-Lectures/HenryLerm>



Please also keep an eye out for an announcement about the Faculty hoodies which will go on sale soon.



Finally, we urge students returning to campus, including on- and off-campus residences, to observe all COVID-19 safety protocols (refer to the screening for students guide) strictly and to consult the university website for further information – <https://www.mandela.ac.za/News-and-Events/Coronavirus-Information/Returning-to-Campus>

### Release of Final Results

Congratulations to the final years that have already secured articles for 2021. We are proud of you and may you fly our Faculty's flag high.

We understand that you may have concerns or queries regarding the release of the final results, especially considering the impact that the COVID-19 situation has had on our 2020 academic calendar. The second semester will run from 13 September to 18 December, with re-assessments taking place from 18 January to 12 February 2021. The official final results will more than likely only be released by the university closer to the end of February.



Please email Mrs Janet van Zyl to request a standard testimonial letter from Prof Govindjee, in order to register your articles (janet.vanzyl@mandela.ac.za). The testimonial will include a paragraph indicating that as a result of the COVID-19 situation, the final end-of-module assessments at Nelson Mandela University for 2020 will be written until 18 December 2020. Students will be afforded additional assessment opportunities from 18 January to 12 February 2021 in order to finalise the 2020 academic year.

This arrangement will affect the processing and communication of marks, also bearing in mind that the Faculty will allow a recess period from 21 December 2020 until 08 January 2021. The students' results for specific modules will become available from end of January 2021 onwards. The precise date of the release of the final results is dependent on the university's Examinations Office and will more than likely be available towards the end of February 2021. Please use the letter from the Dean (to be obtained from Mrs van Zyl) in order to explain the expected delay in the release of final results to your law firms.

Take care

We wish you well for the second semester.

Stay safe and take care.

Prof Avinash Govindjee  
Executive Dean: Faculty of Law



Dr Lynn Biggs  
Deputy Dean: Faculty of Law





## FACULTY OF LAW

### FREQUENTLY ASKED QUESTIONS (FAQs)

#### ADDITIONAL ASSESSMENT OPPORTUNITIES SEMESTER 1 MODULES


11 September 2020


Dear Student

We hope that you continue to remain well and safe at this time. The Faculty has completed Pathway 2 of semester 1 and is in the process of finalising the results for semester 1.

We understand that you have concerns and queries regarding the additional assessment opportunities that will take place in January or February 2021. We hope to answer any questions you may have by means of this FAQ / Q&A document. If you have any further queries, please contact your lecturer, who will pass your concerns on to us.

#### ADDITIONAL ASSESSMENT OPPORTUNITIES: Semester 1 modules

	<b>1. When will the additional assessment opportunities take place?</b>
<ul style="list-style-type: none"><li>We are planning to hold the Semester 1 additional assessment opportunities from 18-22 January 2021.</li></ul>	

	<b>2. Will Pathway 1 students who repeated the module on Pathway 2 be eligible for an additional assessment opportunity in January 2021?</b>
<ul style="list-style-type: none"><li>Students who attempted Pathway 1 (i.e. did all the assessments on PW1) and who were not successful on Pathway 1 were given an additional opportunity to attempt the module on Pathway 2.</li><li>Therefore, Pathway 1 students who repeated the module on Pathway 2 (i.e. did all the assessments on PW2) and who were not successful at the end of Pathway 2 <b>will not be eligible</b> for an additional assessment opportunity in January 2021.</li><li>The final overall result for the Pathway 1 repeat students will not exceed 50%. Pathway 1 repeat students who obtain less than 50% for the module on Pathway 2, will fail the module and will have to repeat the module in 2021.</li></ul>	







**3. What happens if a student failed Pathway 1 (did all the assessments on PW1), but did not attempt Pathway 2 at all?**

- Students who attempted Pathway 1 (i.e. did all the assessments on PW1) and who were not successful on Pathway 1 were given an additional opportunity to attempt the module on Pathway 2, but the student was not able to attempt the module on Pathway 2 for whatever reason, **will be eligible** for the additional assessment opportunities in January 2021.
- The final overall result for the students who attempt the additional assessment opportunity in January 2021 will not exceed 50%.



**4. What happens if a student failed Pathway 1 (did all the assessments on PW1), but only partially attempted Pathway 2?**

- Students who attempted Pathway 1 (i.e. did all the assessments on PW1) and who were not successful on Pathway 1 were given an additional opportunity to attempt the module on Pathway 2, but the student was not able to fully attempt the module on Pathway 2 (i.e. partially attempted PW2) for whatever reason, **will be eligible** for the additional assessment opportunities in January 2021.
- The final overall result for the students who attempt the additional assessment opportunity in January 2021 will not exceed 50%.



**5. What happens if a student partially attempted Pathway 1 (did some but not all the assessments on PW1), and then also partially attempted Pathway 2 (did some but not all assessments on PW2)?**

- Students who partially attempted Pathway 1 (i.e. did some but not all the assessments on PW1) and then partially attempted Pathway 2 (i.e. did some but not all the assessments on PW2) **will be eligible** for the additional assessment opportunities in January 2021.
- The final overall result for the students who attempt the additional assessment opportunity in January 2021 will not exceed 50%.



**6. What happens if a student partially attempted Pathway 1 (did some but not all the assessments on PW1), and then also fully attempted Pathway 2 (did all assessments on PW2) and failed Pathway 2?**

- Students who partially attempted Pathway 1 (i.e. did some but not all the assessments on PW1) and then fully attempted Pathway 2 (i.e. did all the assessments on PW2) and failed the module on Pathway 2, **will be eligible** for the additional assessment opportunities in January 2021.
- The final overall result for the students who attempt the additional assessment opportunity in January 2021 will not exceed 50%.





## 7. Will Pathway 2 first-time students be eligible for an additional assessment opportunity in January / February 2021?

- Students who attempted Pathway 2 for the first-time (i.e. students who did not attempt Pathway 1 at all) and who are not successful on Pathway 2 **will be eligible** for a final additional assessment opportunity in January 2021.
- The final overall result for these students will not exceed 50%.

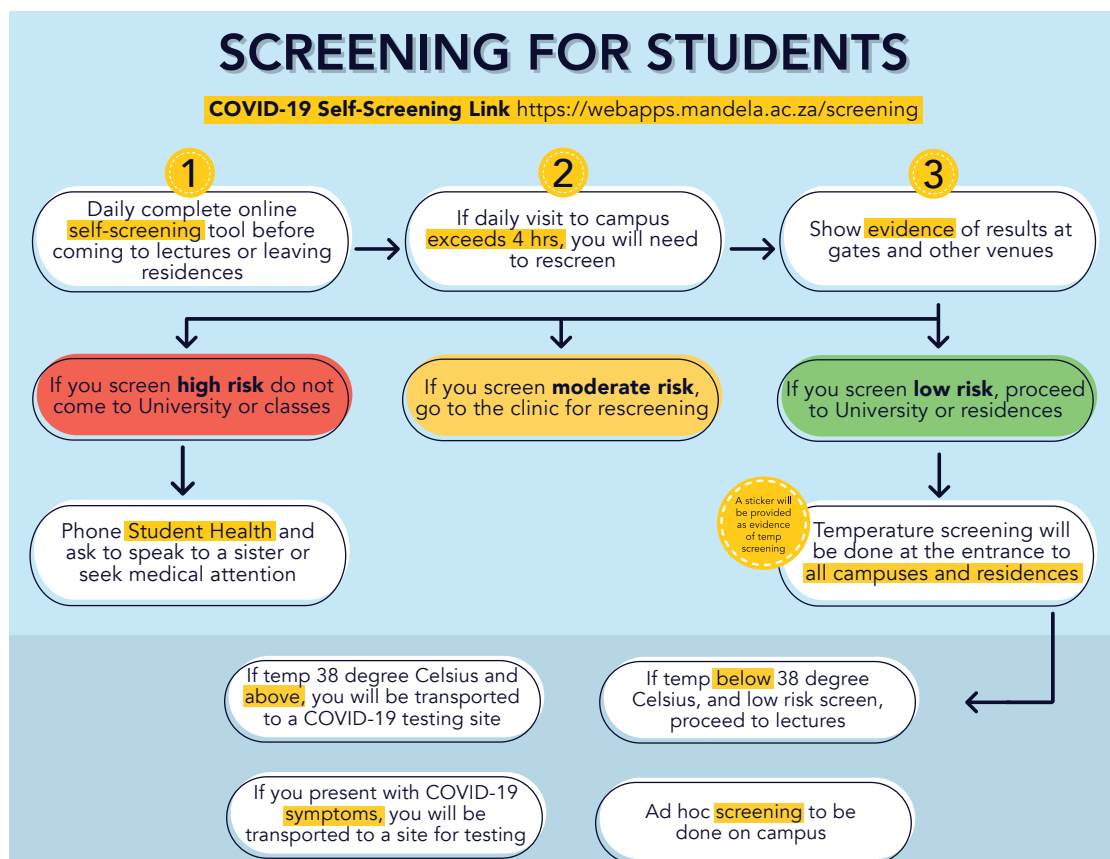


## 8. How will the marks for the additional assessment opportunity be calculated, for qualifying students?

- The final mark will be made up of a “class-mark” and the additional opportunity assessment mark, with a 40:60 weighting being applicable (“class-mark” 40% and additional opportunity assessment mark 60%). The student thus requires a “class-mark”, which will be determined, as follows:
  - The highest mark obtained for Test 1 written before lockdown or for any of the assessments submitted on Pathway 1 or Pathway 2.
- The overall final mark for the module after the additional assessment opportunity in January to be capped at 50%.
- If a student missed all the prescribed assessments during PW1 or PW2, he or she will have a “stand or fall” / “one-shot” chance at passing the module when doing the additional assessment opportunity in January (no “class-mark”). The mark obtained for the additional opportunity assessment will be the final result. However, the final mark to be capped at 50%.

We wish you all the best for the completion of your semester one modules. Take care and stay safe!

**FACULTY MANAGEMENT COMMITTEE  
FACULTY OF LAW**





## FACULTY OF LAW

### FREQUENTLY ASKED QUESTIONS (FAQs)




#### SEMESTER 2

14 September 2020

Dear Student

We hope that you continue to remain well and safe at this time and as we embark on semester 2. We understand that you have queries regarding Semester 2 and hope to answer any questions you may have by means of this FAQ / Q&A document. If you have any further queries, please contact your lecturer, who will pass your concerns on to us.

#### SEMESTER 2

	<b>1. When will Semester 2 commence?</b>
<ul style="list-style-type: none"><li>• Semester 2 will commence on Monday 14 September 2020.</li><li>• All learning and teaching will take place <b>digitally</b> (using Moodle and other zero-rated sites).</li><li>• Lecturers will make regular contact with students via digital means (using Moodle, email, and / or WhatsApp).</li><li>• <b>No</b> face-to-face lectures will take place (to adhere the social distancing requirement).</li></ul>	
	<b>2. Will there be two Pathways in Semester 2?</b>
<ul style="list-style-type: none"><li>• No, due the change to Level 2 of lockdown, there will not be two Pathways in semester 2. There will only be one pathway for all students.</li></ul>	
	<b>3. When will Semester 2 end?</b>
<ul style="list-style-type: none"><li>• Semester 2 will end on Friday 18 December 2020.</li><li>• There will be a short recess at the end of October (26-30 October).</li></ul>	





#### 4. Will there be invitations for students to return to campus?

- The DHET (Department of Higher Education and Training) has recently granted permission to universities across the country to invite an additional 33% of their student body (a total of 66%) to return to campus to make use of the facilities on campus such as wi-fi, the computer labs and the library.
- The university will communicate the arrangements and requirements regarding the invitations to all students in due course. Please keep a look out for information relating to these additional invitations on the websites and student email.
- **ONLY STUDENTS WHO ARE EXPERIENCING PROBLEMS WITH CONNECTIVITY AND ACCESS TO MOODLE FROM THEIR CURRENT PLACE OF RESIDENCE SHOULD CONTACT THE FACULTY IN ORDER TO BE CONSIDERED FOR AN INVITATION TO RETURN TO CAMPUS FOR SEMESTER 2**
- Students registered for a law qualification are to contact Mrs Dieketso Billie ([Dieketso.Billie@mandela.ac.za](mailto:Dieketso.Billie@mandela.ac.za)) or Mrs Nikki Terblanche via email ([Nikki.Terblanche@mandela.ac.za](mailto:Nikki.Terblanche@mandela.ac.za)).
- Students registered for qualifications with other faculties and doing law service modules are required to contact the Faculty Administrators of the respective Faculties within which their qualification falls.



#### 5. Will the semester 2 modules also be in the form of continuous assessment?

- All Semester 2 modules in 2020 have changed to continuous assessment modules.
- There will be at least two assessments (Ass 1 and EMA), with the last being an EMA in the form of a more comprehensive assessment.
  - Assessment One.
  - Assessment Two to be EMA.
- Assessments will take the form of either online quizzes or assignments or both.
- Assessments will include mostly open-book problem style questions.



#### 6. What happens if you get a combined overall mark of below 50% after Ass 1 and the EMA?

- After the marks for Assignment One and Assignment Two (the EMA) have been captured and a student has an overall mark of below 50%, the student will fail the module, but will be eligible to attempt the additional opportunity in February 2021.
- In this instance the overall result may not be more than 50%.



#### 7. Will there be re-submissions of assessments during Semester 2?

- No, students will be required to attempt the prescribed number of assessments for each module. There will not be any re-submission opportunities for any of the assessments.



## 8. How will the Semester 2 marks be calculated, and will there be additional assessment opportunities for Semester 2?

- The final mark for all semester 2 modules will be calculated in the ratio of at least 30:70, with Assessment One counting 30 and the EMA 70.
- An overall final mark of 50% is required for a pass.
- Students who fail the module are to be given a final additional assessment opportunity in February 2021.
- In order to pass the module, semester 2 students are required to submit the prescribed number of assessments and obtain an overall final mark of at least 50% (with the weighting ratio of at least Ass 1: EMA being 30:70).
- If a student does not submit all the assessments, the student will fail the module, but will then be eligible to attempt an additional assessment in February. An overall final mark of at least 50% is required for a pass. The final mark will be made up of a “class-mark” and the additional assessment opportunity mark, with at least a 30:70 weighting being applicable (“class-mark” 30% and additional assessment opportunity mark 70%). The student thus requires a “class-mark”, which will be determined as follows:
  - If the student misses Ass 1, the student’s EMA result will be used as the “class-mark” for the additional assessment opportunity in February. The overall final mark to be capped at 50%.
  - If the student attempts Ass 1 and misses the EMA, the Ass 1 result will be used as the “class-mark” for the additional assessment opportunity in February. The final mark to be capped at 50%.
  - If a student attempts all prescribed assessments and has an overall fail at the end of semester 2, the best mark of either Ass 1 or EMA is used as the “class-mark” for the additional assessment opportunity in February. The final mark to be capped at 50%.
- If a student misses all assessments, he or she will have a “stand or fall” / “one-shot” chance at passing the module when doing the additional assessment opportunity in February (no “class-mark”). The mark obtained for the additional assessment opportunity will be the final result, capped at 50%.



## 9. What is the subminimum rule?

- If the overall final mark is 50% or above, but the students obtained less than 40% for the EMA, the subminimum rule will apply.
- The student will fail the module but will be eligible to attempt the additional opportunity in February 2021.
- In this instance the overall result may not be more than 50%.



## 10. Have the pre-requisites / co-requisites for modules been waived?

- In order to ensure the successful completion of the academic year, the Faculty has adopted a very fluid and flexible approach when considering changes to its modules and their pre-requisites / co-requisites. To this end, the Faculty of Law has waived the pre-requisites / co-requisites for follow-on modules in the 2020 academic year. This means that students will be allowed to register for the follow-on modules without:
  - meeting the sub-minimum requirement for a module, or.
  - passing the pre-requisite module (i.e. this only applies to follow-on modules and not in the case of an academic average requirement).

- In the case where a pass-on link is applicable and learning in the subsequent module builds cumulatively on the learning in the previous module, the previous module may be passed if the weighted average final mark for the two modules is at least 50%. The Faculty has waived the requirement of a minimum mark of at least 40% for the previous module.

We wish you all the best for semester 2. Take care and stay safe!

**FACULTY MANAGEMENT COMMITTEE  
FACULTY OF LAW**

Please see draft Semester 2 academic calendar attached.

**FACULTY OF LAW**

**SEMESTER 2 ACADEMIC CALENDAR**

<b>Semester 2</b> (13 weeks including EMAs before December recess)		
<b>Week</b>	<b>Date</b>	<b>Event</b>
1	14-18 Sept	Digi LT
2	21-25 Sept	Digi LT
3	28 Sept – 2 Oct	Digi LT
4	5-9 Oct	Ass 1
5	12-16 Oct	Ass 1
6	19-23 Oct	Ass 1
<b>7</b>	<b>26-30 Oct</b>	<b>Recess</b>
8	2-6 Nov	Digi LT / Marking
9	9-13 Nov	Digi LT / Marking
10	16-20 Nov	Digi LT
11	23-27 Nov	Digi LT
12	30 Nov – 4 Dec	Digi LT / EMA
13	7-11 Dec	EMA / Marking
14	14-18 Dec	EMA / Marking
<b>15</b>	<b>21-25 Dec</b>	<b>Recess</b>
<b>16</b>	<b>28 Dec – 1 Jan</b>	<b>Recess</b>
<b>17</b>	<b>4-8 Jan</b>	<b>Recess</b>
18	11-15 Jan	Sem 2 EMA Marking completed by 15 January
19	18-22 Jan	Additional Opp Sem 1 PW2 / Mark capturing Sem 2
20	25-29 Jan	Additional Opp Sem 1 PW2 Marking Additional Opp Sem 1 PW2
21	1-5 Feb	Additional Opp Sem 2
22	8-12 Feb	Additional Opp Sem 2
23	15-19 Feb	Marking Additional Opp Sem 2
24	22-26 Feb	Marking, mark capturing and mark finalisation Sem 2

# Faculty of Law Zoom Background



**Download here:**

<https://law.mandela.ac.za/law/media/Store/images/2020%20webinar/Zoom-back-gr-LAW.png>