

# NELSON MANDELA UNIVERSITY



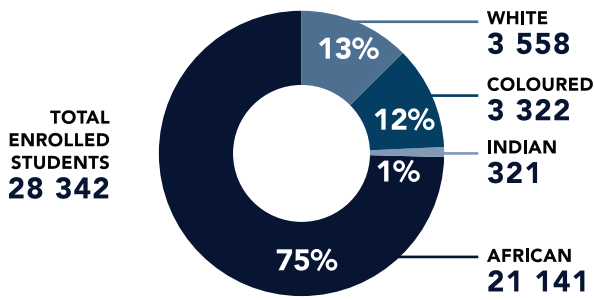
**Q1**  
2020

## Student access and enrolments at a glance: 2020

Produced by the Office for Institutional Strategy

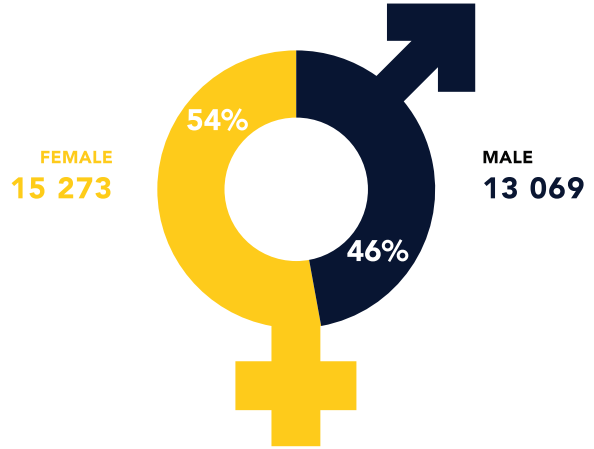
## STUDENT HEADCOUNT

AS AT 11 MARCH 2020



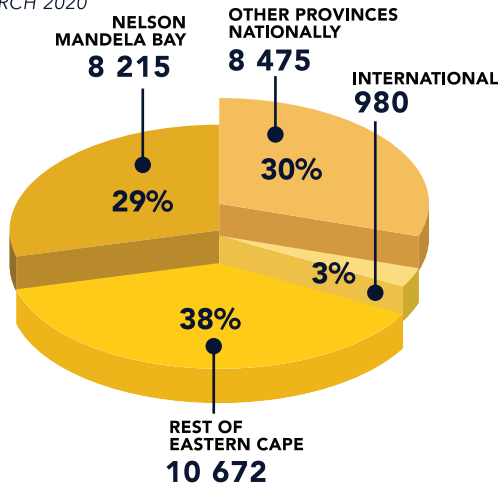
## GENDER DISTRIBUTION

AS AT 11 MARCH 2020



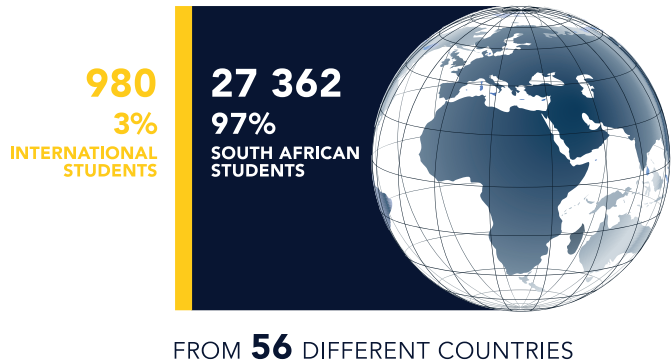
## STUDENTS BY GEOGRAPHICAL ORIGIN

AS AT 11 MARCH 2020



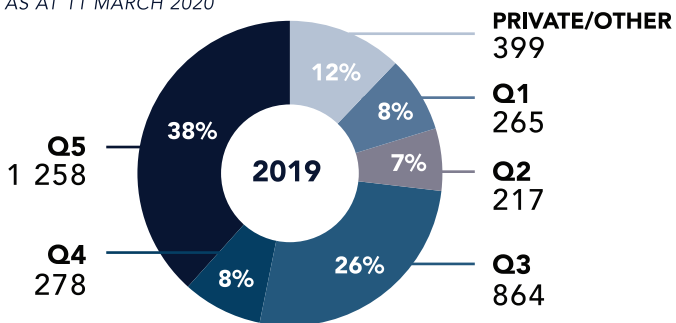
## SOUTH AFRICAN AND INTERNATIONAL ENROLMENTS

AS AT 11 MARCH 2020



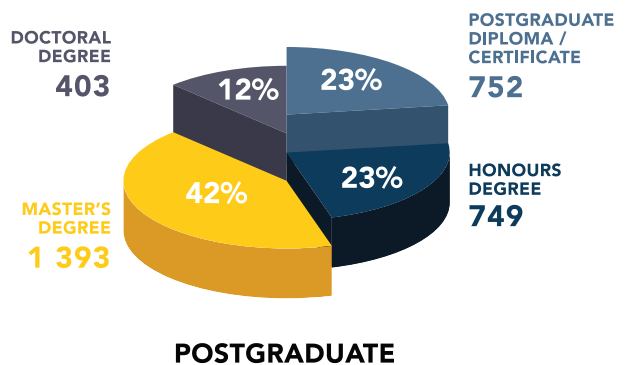
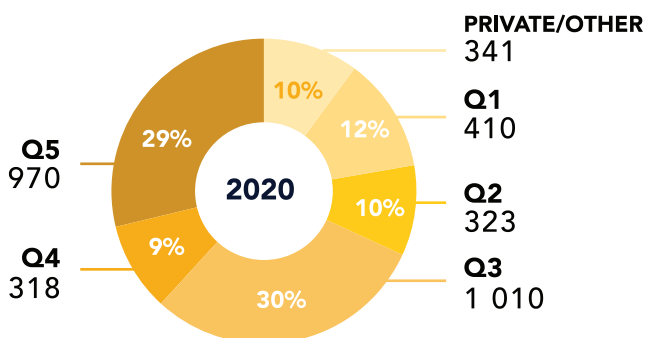
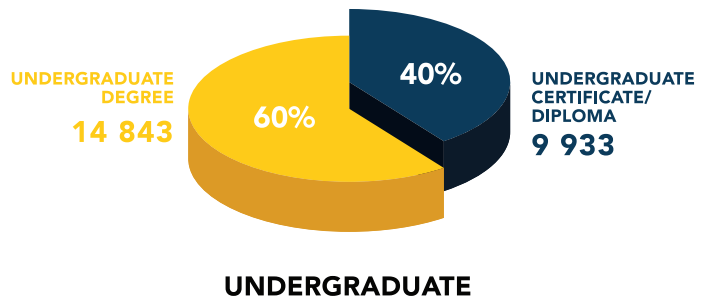
## HIGH SCHOOL QUINTILE PROFILE (EXCLUDING INTERNATIONAL STUDENTS)

AS AT 11 MARCH 2020



## DISTRIBUTION OF UNDER- AND POSTGRADUATE ENROLMENTS BY QUALIFICATION TYPE

AS AT 11 MARCH 2020

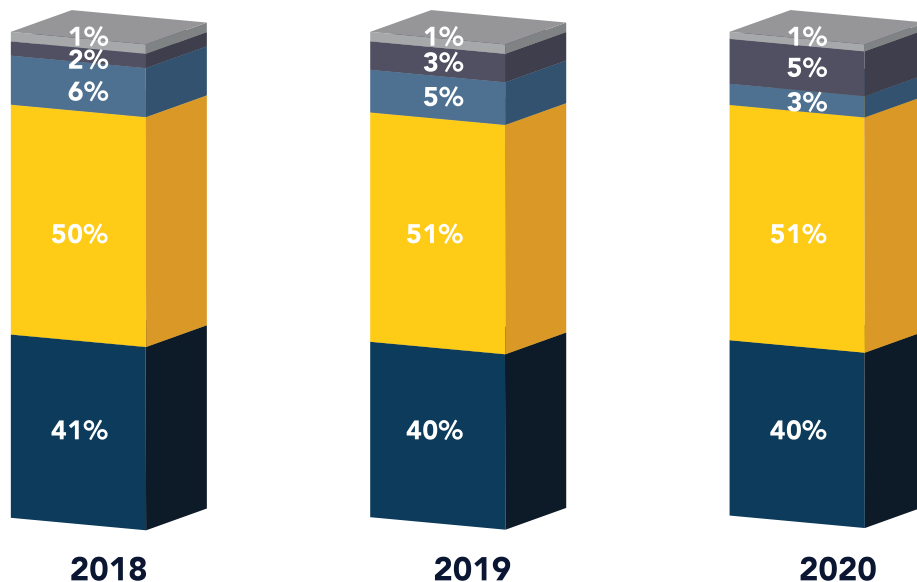


## DISTRIBUTION OF UNDERGRADUATE ENROLMENTS BY QUALIFICATION TYPE

AS AT 11 MARCH 2020

**NOTE:**

BTech enrolments are declining since these qualifications have been phased out and are being replaced with Adv Diplomas in line with national policy requirements.



## FIRST-TIME ENTERING UNDERGRADUATE ADMISSIONS AND REGISTRATION RATIOS 2020

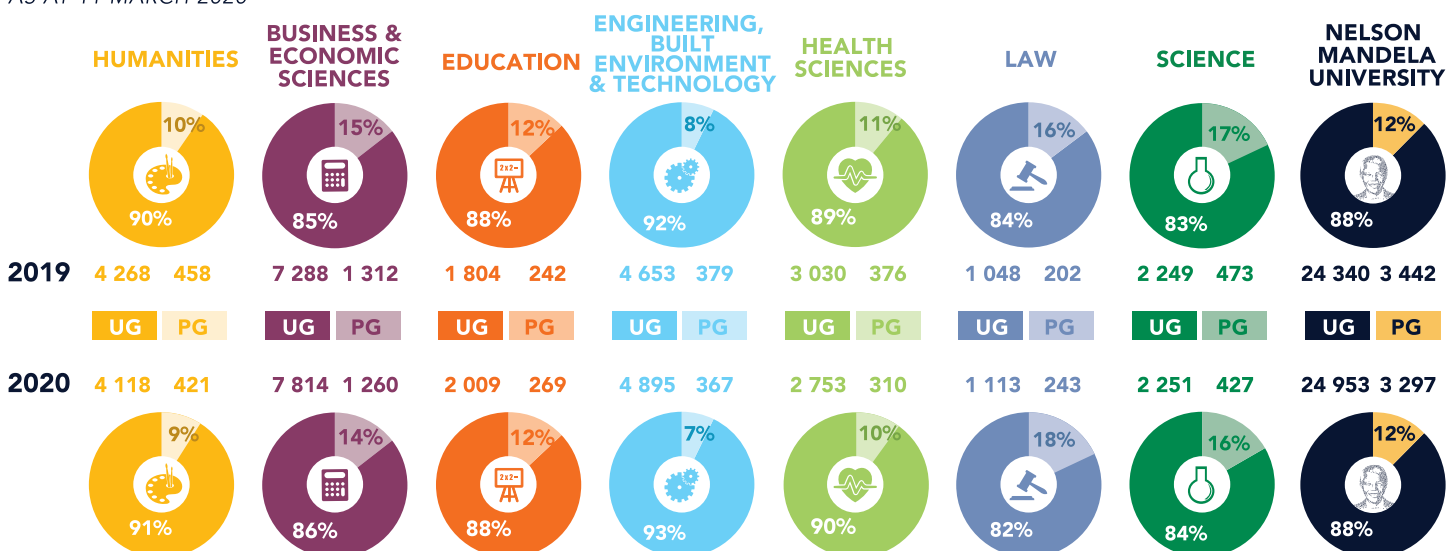
AS AT 11 MARCH 2020

	HUMANITIES	BUSINESS & ECONOMIC SCIENCES	EDUCATION	ENGINEERING, BUILT ENVIRONMENT & TECHNOLOGY	HEALTH SCIENCES	LAW	SCIENCE	NELSON MANDELA UNIVERSITY
<b>ADMISSIONS</b>	1 813	4 378	562	1 922	1 017	501	1 462	11 655
<b>REGISTRATIONS</b>	961	1 847	296	955	462	204	524	5 249
<b>*REGISTRATION: ADMISSION RATIO</b>	53%	42%	53%	50%	45%	41%	36%	45%

\* The registration: admission ratio is the percentage of students that were admitted who finally registered

## UNDER- AND POSTGRADUATE STUDENT ENROLMENTS

AS AT 11 MARCH 2020

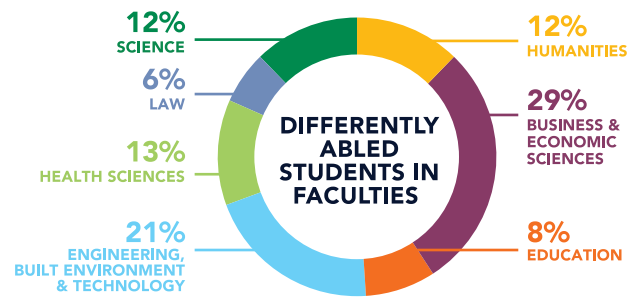
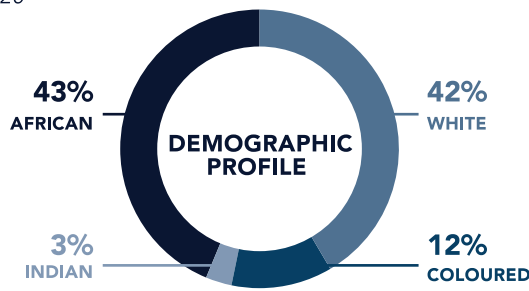


## DIFFERENTLY ABLED STUDENTS (DISCLOSED)

AS AT 10 MARCH 2020

**464**  
2019

**196\***  
2020



<b>65%</b> of disclosed students have neurodevelopmental disabilities	<b>14%</b> consist of physical disabilities	<b>11%</b> have chronic and multiple disabilities	<b>10%</b> have sensory disabilities, i.e. blind, partially sighted and hearing impairment
--	--	--	---

\* The numbers are likely to increase as more students disclose their status

## STUDENTS RECEIVING FINANCIAL AID IN 2020

**2019**

40% of all students received financial aid (full year)

**2020**

48% of all students received financial aid (year to date)



Received financial assistance from NSFAS, Council and other funds (These numbers exclude employer bursars)

## ACCESS TO WIFI & PERSONAL COMPUTERS BY CAMPUS

<b>2019</b>	<b>27 247</b> STUDENTS LOGGED ONTO WIFI	<b>122</b> OUT OF 132	122 out of 132 labs are designated as teaching labs with 3 080 dedicated PCs in these labs	<b>3 080</b> PCs
<b>2020</b>	<b>26 412</b> STUDENTS LOGGED ONTO WIFI THIS YEAR	<b>123</b> OUT OF 133	123 out of 133 labs are designated as teaching labs with 3 854 dedicated PCs in these labs	<b>3 854</b> PCs

## STUDENT : PC RATIO ON CAMPUS 2020

<b>MISSIONVALE</b> 486 / 882 1 : 2	<b>GEORGE</b> 250 / 1 536 1 : 6	<b>2ND AVE</b> 436 / 5 921 1 : 14	<b>NORTH</b> 1 112 / 6 627 1 : 6	<b>SOUTH</b> 1 527 / 13 313 1 : 9	<b>BIRD STREET</b> 43 / 221 1 : 5
--	---------------------------------------	---	--	---	---

## STUDENT ACCOMMODATION: 2019 - 2020

	GEORGE CAMPUS	PORT ELIZABETH CAMPUS	TOTAL:	GEORGE OFF-CAMPUS	PORT ELIZABETH OFF-CAMPUS	TOTAL:
<b>ON-CAMPUS BEDS:</b>						
<b>2019</b>	430	2 869	3 299	240	8 681	8 921
<b>2020</b>	430*	2 869**	3 299	262	12 307	12 569

\*Additional 198 beds to be completed by June 2020. These numbers are not included in the 2020 statistics.  
 \*\* 500 beds project commenced and to be completed by June 2021. Additional 300 beds to be completed in December 2021. These numbers are not included in the 2020 statistics.